

CLASS-C

# WAYFARE









## Premium Paint System

Our eight-step full-body paint system features premium grade paints sealed with three layers of superclear coat with ultraviolet protection. An additional layer of scratch-resistant plastic coating protects the front of the coach, stairwell, and entry door lock.



COASTAL MIST



SAND DRIFT



OBSIDIAN



SILVER SAND



HARMONY



PEBBLE CREEK

## Floor Plans

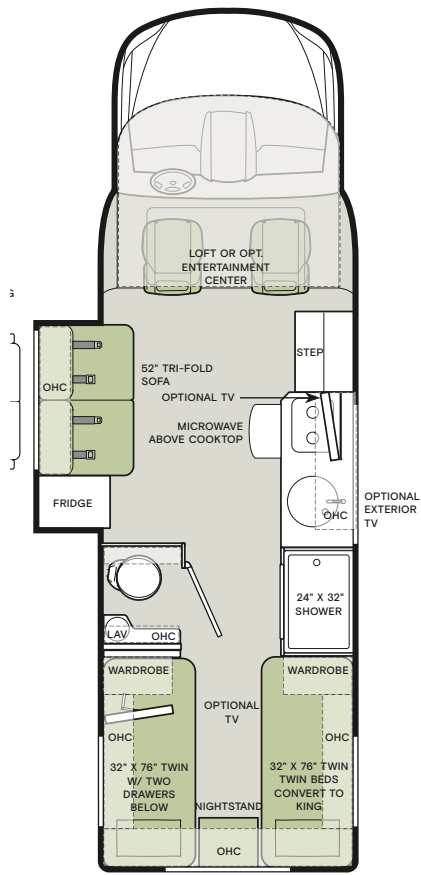


The design of every Wayfarer floor plan must meet four essential criteria: Maximum space, Optimal organization, Relaxation plus, and Elegant atmosphere. Tiffin's MORE Plans offer your family the most comfortable layout for life on the road.

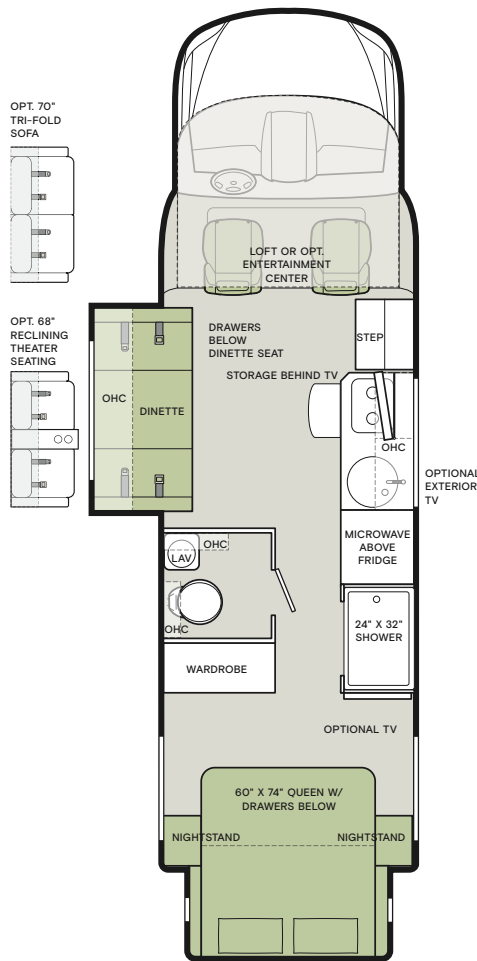
If optional furniture combinations are selected, window locations may vary from diagram shown. All options may not be available in every model.

Because of progressive improvements and specifications, standard and optional equipment are subject to change without notice or obligation. For a complete and up-to-date list of available options and specifications, visit [tiffinmotorhomes.com](http://tiffinmotorhomes.com).

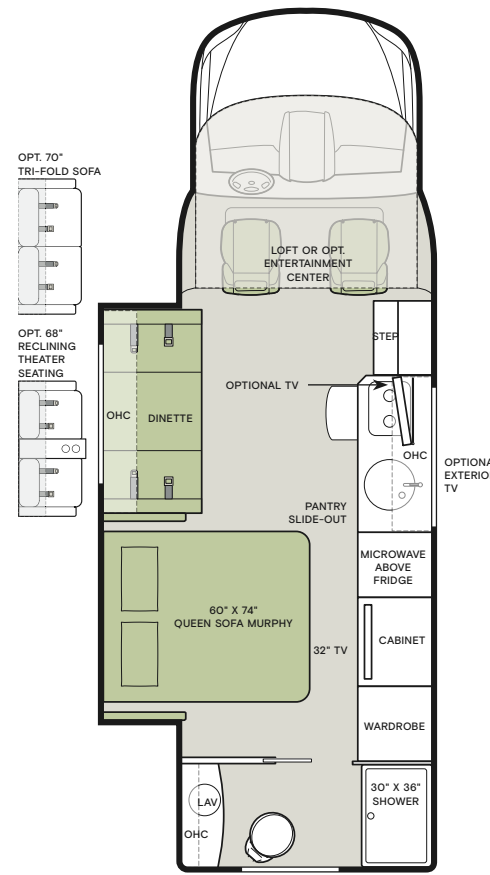
### 25 TW



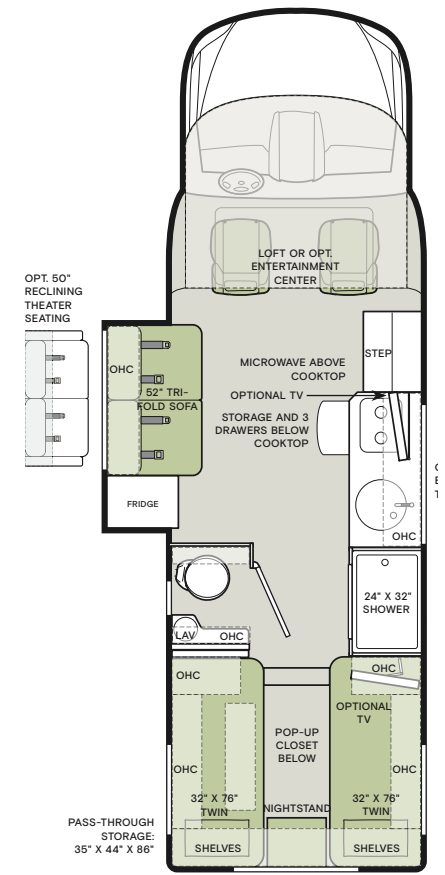
### 25 SW



### 25 RW



### 25 LW





## Interior Décor

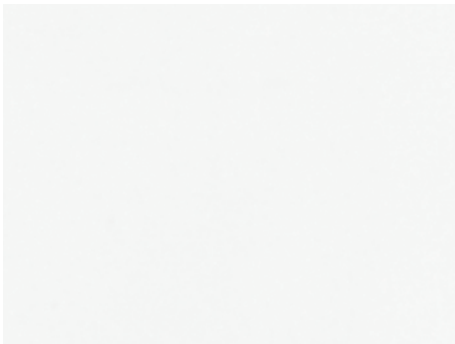
Make it all yours. Personalize your décor experience with the Wayfarer's customization options. Choose between our four décor packages, as well as handcrafted wood cabinetry. The Wayfarer's luxury design options allow you to arrive and live in style, wherever your travels and adventures take you.

### OASIS



BEDROOM

WINDOW TREATMENT



COUNTERTOP

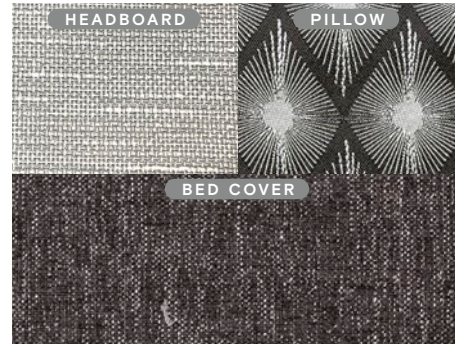
FURNITURE



FLOORING

FLOORING

### MINK



BEDROOM

WINDOW TREATMENT



COUNTERTOP

FURNITURE



FLOORING

FLOORING



VALLCOVERING

CABINETS



ESTON

RUSSET<sup>1</sup>

LINEN

SANDSTONE

ACIER<sup>3</sup> GREY/CHATEAU

CHAMPAGNE



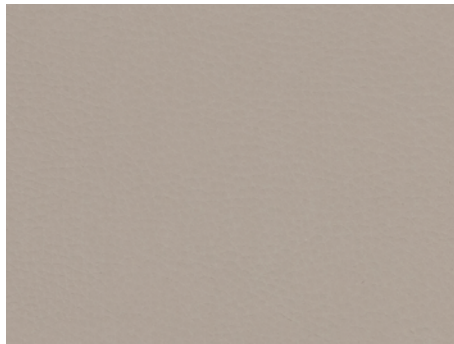
BEDROOM



WINDOW TREATMENT



COUNTERTOP



FURNITURE



FLOORING

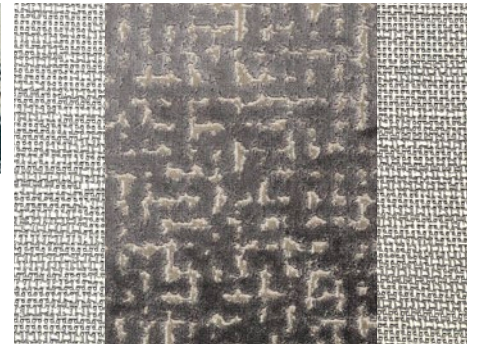


FLOORING

STERLING



BEDROOM



WINDOW TREATMENT



COUNTERTOP



FURNITURE



FLOORING



FLOORING

# Specifications

## MERCEDES BENZ 3500XD DUAL WHEEL CUTAWAY CHASSIS

### HASSIS FEATURES

- 3.0 6-Cylinder Turbo Diesel Engine with 7-speed Automatic Tip Shift Speed Transmission 188 HP/325 lb Torque Aluminum Wheels SumoSprings Ride Assist System BigFoot® Hydraulic Leveling System
- GVWR- 11,030 lb
- GCWR- 15,250 lb
- GAWR Front- 4,410 lb
- GAWR Rear- 7,720 lb
- 170.3" Wheel Base
- 24.5 Gallon Fuel Tank
- 4.8 Gallon DEF Tank<sup>1</sup>
- 5,000 lb Rated Hitch with 500 lb Vertical Tongue Weight and 7-pin Connector

### AFETY FEATURES

- Attention Assist
- Traffic Sign Assist
- High Beam Assist
- Active Brake Assist (Collision Mitigation)
- Lane Keeping Assist
- Load Adaptive Electronic Stability (ESP)
- Active Distance Assist Distronic (Adaptive Cruise Control)

### RIVER'S COMPARTMENT

- MBUX Multimedia System with 10.25" Touchscreen Intelligent Navigation Smartphone Integration For Apple Carplay® and Android™ Auto Tray for Smartphones with Charging Ports Instrument Cluster with Color Display
- Leather Wrapped Steering Wheel with Integrated Controls
- Emergency Call System
- Wireless Internet Access
- Keyless Start
- Power Cab Door Locks and Windows
- Windshield with Filter Band
- Rain Sensor for Windshield Wipers
- Manual Parking Brake
- Heated/Electric Adjustable Mirrors
- Optional Side-view Cameras
- Black Leather, Heated, Power Adjustable Driver and Passenger Seats- Both with Swivel Base

Diesel Exhaust Fluid (DEF) is the active component used in Selective Catalytic Reduction (SCR) engines to reduce nitrogen oxide emissions by 90% to meet EPA standards.

WEIGHTS AND MEASURES	25 TW	25 RW	25 LW	25 SW
Overall Length (approximately) <sup>2</sup>	25' 8"	25' 8"	25' 8"	25' 8"
Overall Height (max.)	11' 4"	11' 4"	11' 4"	11' 4"
Interior Height	80"	80"	80"	80"
Overall Width <sup>2</sup>	90"	90"	90"	90"
Interior Width	87"	87"	87"	87"
Fresh Water (gal.)	38	25	32	38
Lack Water (gal.)	28	28	28	28
Grey Water (gal.)	32	36	32	33
PG Tank (gal.)	12	12	12	12
Storage (cubic ft - app.)	68	37	130	54
Ball Hitch Capacity <sup>3</sup>	5,000 lb	5,000 lb	5,000 lb	5,000 lb

The approximated coach width and length does not include side view mirrors.

Tow ratings and ability are subject to gross combined weight ratings on the tow vehicle.

### PLUMBING AND ELECTRICAL

- Truma® Comfort Plus Instant Hot Water Heater
- Spyder Multiplex Coach Control System
- Two 12 V House Batteries (Group 27/180 Amp Hours)
- 30 Amp 110 V House Service Power Cord - 30' Permanently Attached
- 3.2 kw Diesel Generator
- 2000 Watt Inverter Pure Sine
- 110 V and 12 V House Load Center with Power Converter
- HD Over-the-air TV Antenna
- Prep for Satellite
- Pre-wired for Solar Panels
- 15 K Mid Air Conditioner
- Park Cable and Ground Satellite Hook-up
- Wall-mount Thermostat with Built-in Temperature Sensor
- 30 K BTU Propane Ducted Furnace
- 12 V Engineered Wiring Harnesses
- Heated Holding Tanks

ELECTRICAL OPTIONS	25 TW	25 RW	25 LW	25 SW
Complete Solar System with 190 Watt Solar Panel	0	0	0	0
Wi-Fi Ranger with LTE	0	0	0	0
In-motion Satellite	0	0	0	0
Lithium Battery Drop-in Solution	0	0	0	0

### EXTERIOR

- Girard® 16" Wind Sensor Awning with Speakers
- Automatic Lights in Exterior Compartment Doors
- Entrance Door Assist Handle

## INTERIOR

- Stereo System with Separate Speaker Zones
- LED Lights
- Privacy Shades
- 2 Captain's Chair Lounge Cushions
- Soft Vinyl Ceiling
- Combination Carbon Monoxide and Propane Detector
- Fan-Tastic Vent Fan
- Swivel Tables

INTERIOR OPTIONS	25 TW	25 RW	25 LW	25 SW
Handcrafted Cabinetry	Russet	0	0	0
	Acier Grey/Chateau <sup>4</sup>	0	0	0
	Sandstone	0	0	0
	Linen	0	0	0
	Oasis	0	0	0
Fabric Suites	Mink	0	0	0
	Sterling	0	0	0
	Champagne <sup>5</sup>	0	0	0
Wallcovering	Reston Ivory	S	S	S
Central Vacuum System with Retractable Hose	0	0	0	0

<sup>4</sup> offered with Sterling only

<sup>5</sup> Linen or Tavern Leatherette

### LIVING AREA

- House Radio/DVD/Bluetooth
- Flush Mount Windows
- Overhead Bunk

LIVING AREA OPTIONS	25 TW	25 RW	25 LW	25 SW
Living Area TV	S	0	S	S
Face-to-face Booth Dinette - Driver Side	-	S	-	S
70" Sofa w/Trifold Hide-a-bed (54" x 74") - Driver Side	-	0	-	0
50" Sofa w/ Trifold Hide-a-bed (42" x 74") - Driver Side	S	-	S	-
68" Electric Theater Seats - Driver Side	-	0	-	0
50" Electric Theater Seats (No Cupholders) - Driver Side	0	-	0	-
Overhead Entertainment Center	0	0	0	0

### KITCHEN

- LP Cooktop with Built-in Cover
- Convection Microwave
- Single Bowl Sink
- Designer Faucet
- Over-the-counter Lighting
- Under-the-counter Lighting
- Fire Extinguisher
- 110 V Outlet
- Countertop Extension

KITCHEN OPTIONS	25 TW	25 RW	25 LW	25 SW
12 V 5 Cubic Foot Refrigerator	S	-	S	-
12 V 6.5 Cubic Foot Refrigerator	-	S	-	S
Gas/Electric 5 Cubic Foot Refrigerator	0	-	0	-
Gas/Electric 6.5 Cubic Foot Refrigerator	-	0	-	0

### BEDROOM

- Inverted Outlets in Bedroom for CPAP Machine
- USB Port with 110 V Plug
- Wardrobe
- LED Reading Lights

BEDROOM OPTIONS	25 TW	25 RW	25 LW	25 SW
Bedroom TV	0	S	0	0
Queen Sofa Murphy Bed (60" x 74")	-	S	-	-
Two Twin Mattresses (32" x 76") Converts into King Bed (86" x 76")	S	-	-	-
Two Twin Mattresses (32" x 76") Pop-up Closet Storage on Driver Side	-	-	S	-
Queen Mattress (60" x 74")	-	-	-	S

### BATHROOM

- Vanity Storage
- Fan-Tastic Vent Fan
- Porcelain Vessel Sink with Chrome Faucet
- Shower Head Adjustable for Height
- LED Lighted Mirror

BATHROOM OPTIONS	25 TW	25 RW	25 LW	25 SW
One-piece Fiberglass Shower (30" x 36") with Skylight	-	S	-	-
One-piece Fiberglass Shower (24" x 32") with Skylight	S	-	S	S



1

YEAR OR 12,000 MILES  
LIMITED WARRANTY

3

YEARS PAINT  
DELAMINATION  
LIMITED WARRANTY

5


YEARS OR 100,000 MILES  
CHASSIS POWERTRAIN  
LIMITED WARRANTY

3

YEARS OR 36,000 MILES  
MERCEDES-BENZ CHASSIS  
LIMITED WARRANTY

1

YEAR COACH  
ROADSIDE SERVICES

FOR PARTS & SERVICE CALL 205.487.4710 OR VISIT [TIFFINMOTORHOMES.COM](http://TIFFINMOTORHOMES.COM)  
625 FAWN GROVE ROAD, WINFIELD, AL 35594  



**TIFFIN**

MOTORHOMES